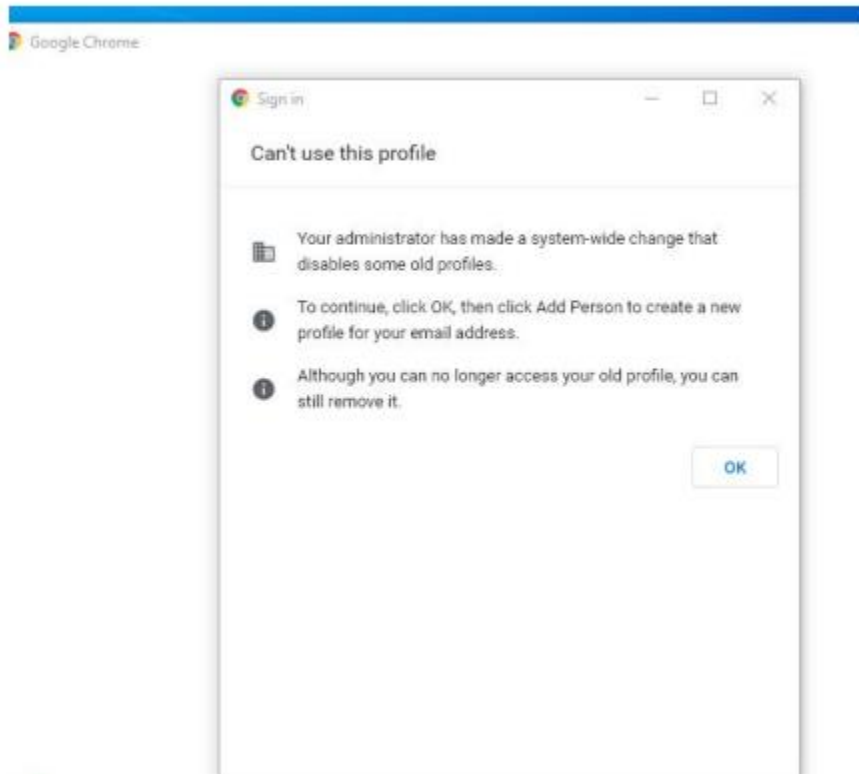


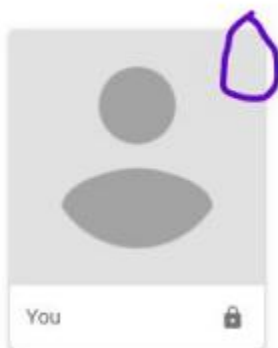
If the student has trouble signing in or get the error below, you will need to remove the person and have the student sign in again.



To remove the person do the following: Put your mouse over the top right hand corner of the "You" box and 3 dots will appear.

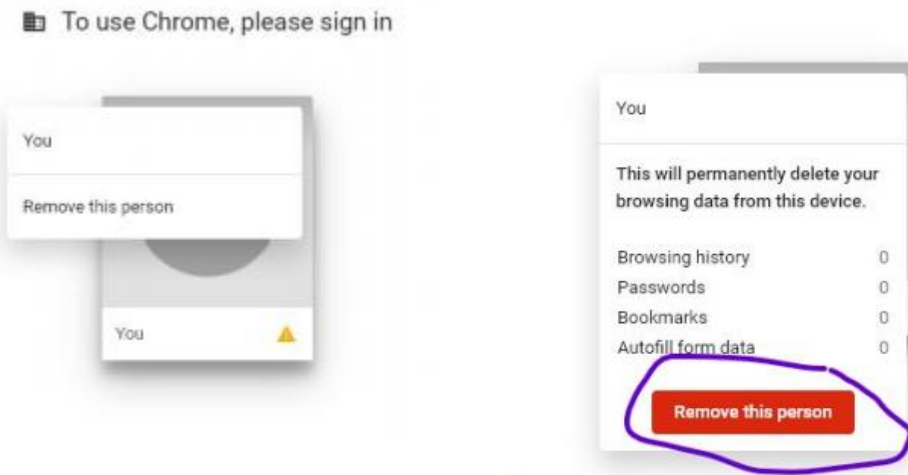
person.

 To use Chrome, please sign in



Click on the 3 dots.

Then click on “Remove this person.”



Once you have removed this person, a new “You” box will appear and the student can sign into Chrome again.

When it comes up asking to Sync....click on Yes.